

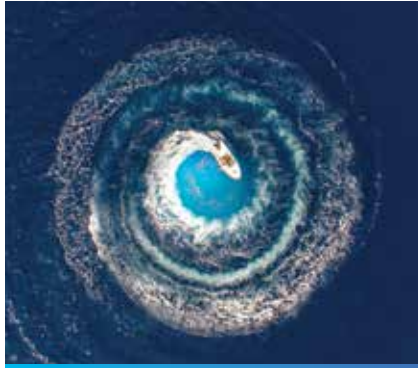
# Aliaxis Middle East Corporate Profile



[alixis-me.com](http://alixis-me.com)



**we  
make  
life  
flow**



**2**

We are  
Aliaxis



**6**

Building  
Solutions

**22**

Infrastructure  
& Utility



**36**

Irrigation &  
Agriculture



**30**

Industry

# We are Aliaxis

Aliaxis is a global leader in the manufacturing and distribution of advanced plastic piping systems for building, industrial and utility applications. We provide innovative and sustainable solutions for energy and water and our global workforce of over 16,000 employees is dedicated to setting industry benchmarks.

The Aliaxis international footprint is significant and now encompasses more than 100 manufacturing and commercial companies which operate in over 45 countries. Privately owned and headquartered in Brussels, Belgium, we are passionate about providing local solutions that are driven by global innovation and technical expertise.

## The Aliaxis way

At Aliaxis, our values define who we are as a Group. They make us who we are. We want to achieve more together, working with and for people. We want to be flexible, fast and agile so we can answer our customers' needs. But above all, we want to improve people's lives by living our values and by making a difference, shaping a better, sustainable tomorrow.

**Connect to win – Passion to build – Commitment to care**



**our vision**

We make life flow, shaping a better tomorrow by connecting people with water and energy.



**our purpose**

We are passionate about creating sustainable innovative solutions for water and energy. We provide people around the world with advanced plastic piping systems, leading our industry in a way that anticipates the rapidly evolving needs of our customers.



# A passion for excellence

At Aliaxis, we are dedicated to delivering excellence in everything we do. The Aliaxis Promise defines our commitment to the highest industry standards:

## **We are expert solutions providers**

We specify and deliver tailor-made systems for specific segments such as building, industry and infrastructure.

## **Working towards a sustainable future**

In everything we do, we seek the right balance between planet, people and profit.

## **Leaders in innovation leadership**

We are committed to offering value adding innovations in customer interaction (with distributors, consultants and designers), including digital initiatives.

## **Offering our clients the widest product range**

Our businesses provide an extensive range of innovative and high-quality products and solutions.



# Introducing Aliaxis Middle East

Our regional office in Dubai, UAE, was set up in 2012 followed by our office in Riyadh, KSA, in 2014, to provide strategic support to our leading brands that have been tried and trusted in the Middle East market for over 40 years.

Aliaxis ME places huge importance on providing comprehensive local support and this is achieved through responsive support teams. This means we work closely with you to provide products and solutions that continually exceed expectations ensuring projects run smoothly and reliably.

Whether you are an architect, MEP consultant,

contractor, interior designer or installer, you can count on Aliaxis ME to provide carefully tailored solutions that are reliable, safe and sustainable.

Our regional offices offer technical and sales assistance to all our Middle East customers on both wholesale and project sectors in our key segments.

The Aliaxis ME team is split between Dubai and Riyadh and comprises a variety of nationalities, diverse cultures, and unique strengths which collectively enable us to offer the world-class service we have today.

# We solve problems, bring solutions and create value.



## **range**

denotes range of sizes available



## **application**

ideal sites for use



## **accreditation**

list of certifications held

# Building: offering high performance and durability

Aliaxis offers sanitary, plumbing and building solutions within the building segment. Our solutions are designed to meet the needs of different types of construction across a variety of global markets. Furthermore, we understand the importance of high performance and reliability. Whether it's for residential, commercial or hospitality buildings through to educational institutions and healthcare facilities, we offer a wide range of products and solutions.







## Wefatherm PP-R & PP-RCT hot and cold-water supply systems

Wefatherm's specialist water supply system is made in Germany and has been used for over 30 years in different water applications that demand high standards of durability and reliability. The system is corrosion-free and is safe and easy to install for both hot and cold-water supply systems

The comprehensive product range includes both PP-R and PP-RCT and is manufactured according to highest ISO and DIN standards for hot and cold installations in PP material.

The Wefatherm factory, located in Wunstorf Germany, is focused on delivering quality systems all the way from initial product development stage through after sales support. Focused on innovation and quality, the system uses different welding technologies to make jointing easy, straight-forward and versatile.

High resistance to internal pressure, flexibility and impact resistance make PP-R the ideal material for safe and reliable installations.



Wefatherm PP-R pipes systems offer a complete system for floor distribution, riser mains and connection to risers. Pipes are available in diameters of 20 mm to 315mm. The range offers solutions both in PP-R and PP-RCT further than any welding method (socket welding, butt-welding, electrofusion).



Wefatherm pipes systems can be applied for typical domestic water supply systems such as drinking water, hot tap water and sanitary applications.



DNV-GL



WRAS





# dBlue

## dBlue acoustic soil & waste systems

dBlue acoustic soil & waste system is manufactured in Poland and offers more than just basic waste water disposal. This is because they are made from a state-of-the-art combination of plastic and sound absorbing mineral filler. This results in a unique product that offers a remarkable reduction in noise levels to as little as 18 dB.

dBlue's triple-layer pipe structure is produced using the latest co-extrusion technology. This provides

the perfect combination of acoustic performance, weight, resistance and mechanical strength as well as improving drainage flow. Akatherm dBlue offers a complete range which includes the dBlue floor gully and Akavent, the ideal system for high-rise buildings. Tests and measurements of noise emitted by the Akatherm dBlue system have been conducted according to the European standard EN 14366 'Laboratory measurement of noise from waste water installations' and to the requirements set by the Building Code of Australia (BCA).



dBlue is available in diameters of 40mm to 200mm with uniform fittings and acoustic brackets. The system is 100% recyclable.



Ideal for multi-occupancy buildings, hotels, hospitals, schools and other commercial applications where reduced noise levels are preferred.





## Akatherm HDPE soil & waste system

Akatherm HDPE is manufactured in the Netherlands and is a drainage system that combines flexibility with robustness and reliability. It is a superior alternative to cast iron and offers complete solutions for both above and below ground drainage.

Akatherm HDPE is made of High-Density Polyethylene (HDPE) which can be welded for reliable, pull tight and leak free joints.

It is lightweight, resistant to both UV and high temperatures, and is cost effective because it can last over 50 years with little maintenance. Akatherm HDPE also provides a fully closed system using butt-welding and electrofusion resulting in long-life, leak-free homogeneous joints. These are suited to the most demanding situations that require the toughness, flexibility and impact resistance that only Akatherm HDPE can deliver.



Akatherm HDPE soil & waste system pipes and fittings range from 40mm to 315mm, including wide range of branches, bends, traps and connection fittings.



Ideal for drainage in multi-storey hotels, residential and office buildings.





## Marley UPVC and underground drainage systems

The Marley brand is manufactured in the UK and is globally known for its innovative solutions in the field of plumbing and drainage. Now in its 65th year, it continues to offer the finest in technical support as well as a wealth of product and installation knowledge.

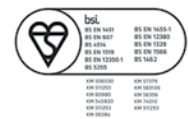
Marley Plumbing & Drainage produces a complete range of Unplasticized Polyvinyl Chloride (UPVC) above ground and underground drainage systems as well as waste systems. It is designed for commercial, residential and large-scale developments, as well as smaller projects.



The UPVC soil systems (pipes & fittings) are available in sizes 82mm, 110mm, 160mm and 200mm. Waste systems (pipes and fittings) are available in 32mm, 40mm and 50mm. Underground drainage systems are available in sizes up to 200mm.



Ideal drainage solutions for high and low rise installations within residential, commercial and large-scale developments.





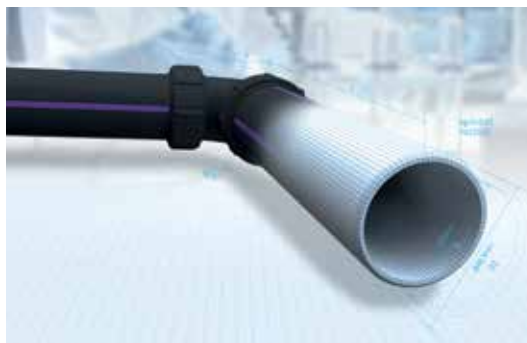
## Durapipe's specialized chemical drainage, Vulcathene

Vulcathene is manufactured in the UK and is a system specifically designed and engineered for laboratory drainage. It has been a market leader for over 65 years in transporting chemical waste in a wide range of laboratory installations. The system has a strong global reputation for its suitability in many applications including schools, universities, hospitals, research facilities and industrial environments.

Vulcathene is manufactured using a co-polymer

polypropylene with 3% carbon black ultra-violet stabilizer. This creates a system that offers a high level of chemical resistance to a wide range of effluents. A comprehensive list of these chemicals can be provided upon request.

Two easy jointing methods are available in this range: mechanical and enfusion. These allow flexible design, efficient installation and ease of system extensions and maintenance.



Vulcathene chemical drainage range from 38mm to 152mm.



Ideal for drainage in hospitals and clinics, pharmaceutical companies, schools, universities and colleges.





# Nicoll

by **alixis**

## Nicoll Bathroom Solutions

Nicoll is a specialist provider of water drainage solutions and management systems, manufactured from plastic materials for all building applications. Nicoll designs, develops and manufactures almost all of its products in its home country of France. In order to satisfy the ever-changing functional and aesthetic requirements within the construction industry, Nicoll places a particular emphasis on the research and development of its products to ensure they are always at the forefront of industry demands.

The Nicoll Sanitary range offers a complete solution from shower drainage to concealed cisterns. Its vast product portfolio covers drainage solutions for washbasins, bathtubs, shower boards, and bidets. Developed for strong, ultra-hygienic, and design-led installations, Nicoll's range of concealed cisterns, float valve mechanisms, connectors, fittings, and drains are known for their excellent resistance over time.



Concealed cisterns & flush plates, flush mechanisms & float valves, shower channels, floor & bath drains, traps & waste, shower sets.



All bathroom plumbing requirements.





## Jimten

Jimten is a Spanish manufacturer of plumbing supplies with over 50 years of expertise in the sector. The Jimten product range is comprehensive and includes a wide range of materials and parts. The key advantage of the product line lies in its easy installation and superlative performance making the brand globally renowned in the market.



Floor traps, shower channels with vertical/horizontal outlets, specialized corner drains, sinks and syphons.



All bathroom plumbing requirements.





## Multikwik

Multikwik is a UK based manufacturer of high-quality sanitary products. It has been a pioneer in "fit and forget" solutions to professional plumbers for over 50 years.

Thanks to its flexible Ethylene Vinyl Acetate (EVA) and

reliable Thermoplastic Elastomer (TPE) seals, Multikwik WC connectors ensure a watertight joint past the point of installation making them ideal for tolerating movement and WC load bearing pressures. The seals and multi-depth fins ensure a reliable connection to all pipe sizes and materials.



High quality traps designed with plumbers, for plumbers, offering quick and easy installation (hand tighten connections) to the waste system.



For connecting basins, sinks, baths, showers and utilities to the waste system.







## Nicoll Hydraulic Channels Solutions

Nicoll is a specialist provider of water drainage solutions and management systems, manufactured from plastic materials for all building application. Nicoll designs, develops and manufactures almost all of its products in its home country of France. In order to satisfy the ever-changing functional and aesthetic requirements within the construction industry, Nicoll places a particular emphasis on the research and development of its products to ensure they are always at the forefront of industry demands.

Nicoll's hydraulic drainage channels are made from synthetic materials offering high-performance linear drainage for runoff water. They offer a guarantee of

quality, mechanical strength, weather tightness, and durability.

CONNECTO® and KENADRAIN® are professional ranges of hydraulic channels for both, light-duty (garages, driveways, patios, swimming pools, terraces etc.) and heavy-duty applications (car parks, petrol stations, roads, hard shoulders etc.), meeting the highest environmental demands in rainwater management. These prefabricated systems, thanks to their male-female interlocking assembly and the complete range of accessories (vertical, side outlets, and sump units) enable an easy installation and integrate perfectly into the drainage network.



CONNECTO® Load classes: from A15 to C250, length available in 0.5, 1 and 4 m with a large choice of gratings in different materials and designs.

KENADRAIN® Load classes: from A15 to E600, length available 1m, large range of grids in materials and designs.



Hydraulic channels for both, light-duty (garages, driveways, patios, swimming pools, terraces, etc.) and heavy-duty applications (car parks, petrol stations, roads, hard shoulders etc.)





# REDI

## REDI U-PVC large bore fittings for non-pressure applications & waste water treatment units

The REDI portfolio is manufactured in Italy and has been in the plastic fittings market for over 60 years. It offers a complete range of metric drainage systems for above and below ground applications.

REDI systems are the perfect solution to managing effective transportation of waste water from buildings

into the main sewer. The range includes the innovative and time-saving REDI easy clip sewage saddle which enables a quick and reliable connection to the sewer. Another best-selling product is the anti-flooding valve engineered with a revolutionary design shape that optimizes performance and is fitted with two flaps to guarantee integrity.



PVC-U fittings from 110mm to 630mm, push-fit jointing system with sealing lip-rings along with solvent weld system.



Ideal for civil and industrial waste water.



UNI EN ISO 9001, UNI EN ISO 14001





## Studor air admittance valves and P.A.P.A (Positive Air Pressure Attenuator)

Developed in the UK, Studor has been leading the way in drainage ventilation technology since 1975. It excels in providing solutions through innovative products which meet the requirements of all types of buildings' drainage systems.

Solutions include a range of valves and complete systems that limit pressure fluctuations and guarantee

the integrity of traps. These solutions ultimately eliminate drainage smells and offer maintenance-free drainage systems.

Studor's high-quality systems have been proven in both commercial and residential buildings and conveniently eliminate the need for roof penetrations and extensive group vent piping.



Air Admittance Valves (Mini-Vent, Maxi-Vent) and Positive Air Pressure Attenuator (P.A.P.A).



Ideal for low and medium rise buildings, as well as high rise.



ALN02 4830 2002 - WMA022830  
WMA02 483 2017 - WMA022829  
WMA02 483 2016 - WMA022831



011 79003  
011 79008





## U-PVC Pressure Fittings

ASTORE thermoplastic pipework systems have been manufactured in Europe and used for the pressure pipework requirements of different market sectors for many years. Since 1970 ASTORE has been known worldwide for the cost effective and reliable thermoplastic fittings and valves offer for pressure pipework.

The ASTORE U-PVC Pressure Fittings range is used for a variety of applications where a lightweight, flexible and durable pipework system is required.



The ASTORE U-PVC Pressure Fittings range includes:

Metric series from D 12 mm to D 315 mm

Threaded series from R 3/8" to R 4"

Transition series from D 16x3/8" to D 110x4"



U-PVC Fittings for use in pressurized irrigation systems, water abduction, chemical installations and for water treatment in general.



**WRAS**





## GIRPI KRYOCLIM®

GIRPI KRYOCLIM® is manufactured in France and offers a complete solution for chilled fluids. The product is made from HPF®, a state-of-the-art synthetic material which offers excellent physical and chemical properties at very low temperatures. This ensures that the pipes are corrosion-free, have low condensation and exhibit low coolant losses.

The KRYOCLIM® system features many advantages for secondary/indirect refrigeration and air-conditioning applications between  $-30^{\circ}\text{C}$  and  $+40^{\circ}\text{C}$ . The product range includes a wide range of diameters, fittings and accessories which facilitate installation in the commercial and refrigeration fields.



A complete system for chilled water services, pipes, fittings and accessories from d20 to d200mm in PN10 (except d200 mm in PN6)



Ideal for central cooling in residential and commercial buildings, industrial and food industry.



Best in class fire reaction rating (Euro classes): B s1 d0





## GIRPI HTA

GIRPI HTA is a complete piping system for high sanitary requirements in domestic hot and cold water services. Manufactured in France, HTA system is made from CPVC which makes it resistant to chlorine based water treatments, high temperatures and helps limit biofilm and waterborne bacteria development (like legionella or pseudomonas) to help maintain water quality.

GIRPI HTA has a complete dedicated product range with more than 450 accessories, including mechanical transition fittings, valves, expansion compensators, temperature control fittings. It also enables ease of installation with color coded pipes for hot and cold application.



Products range from d16 to d63 in PN25 and d32 to d160 in PN16.



Ideal application in hospitals, hotels and the marine industry.



Best in class fire reaction rating (Euro classes): B s1 d0





## The sustainable solution for wastewater treatment

Water treatment and management contribute to preventing pollution of the water table and soil. ISEA offers a complete range of systems for the treatment and management of wastewater. The treatment systems can be installed in civil, industrial, and commercial buildings.

Manufactured in Italy, ISEA solutions are used to treat wastewater, grey water and blackwater, from buildings include Grease separators, septic tanks, Imhoff tanks and activated sludge or percolating filter treatment systems.

For more than ten years, ISEA has been offering its engineering solutions in wastewater treatment to the market, from the concept to manufacturing, installation, and maintenance.

Initially specialized in 5 to 28 E.I. and 28 to 100 E.I. modules, the company has constantly enlarged its portfolio to comply with market needs, and mainly to perform on petrol installations and agglomerations up to 3000 E.I. Thanks to its experience, ISEA developed two types of highly efficient installations for effluent treatment, based on the concept of activated sludge system.



ISEA solutions includes grease separators, septic tanks, Imhoff tanks, activated sludge, or percolating filter treatment systems, and lifting stations.



Pre-treatment of wastewater from building (grey water and black water) and treatment of water containing oils from civil, industrial and commercial uses. ISEA also offers solutions for rainwater run-off and the collection and re-use of rainwater for irrigation and household.



# Infrastructure & Utility: delivering expertise and innovation

Aliaxis offers industries and communities a broad range of solutions for water and gas distribution, sewerage, stormwater management and irrigation. Our tailor-made solutions are the result of industry expertise gathered from all our global businesses.







## Friatec

Friatec's world-leading patented electrofusion systems have been used in projects all around the world. These innovative electrofusion products are made in Germany and include many unique features, all of which are designed to improve the speed of installation and use without compromising on quality and longevity.

Friatec's electrofusion fittings offer superior jointing of High Density Polyethylene (HDPE) material. Their unique features and benefits include: durability, safe and easy installation, superior design with exposed heating coils for improved hold, longer fusion zones for more grip, and larger insertion depths. The fittings are also available in an extensive range of sizes.



Shut-off valve, pressure tapping tees, pressure tapping valves, excess flow valves, ball valves, couplers, reducers and repair saddles.



Aliaxis Deutschland offers solutions for the connection or repair of pipelines in water supply, sewage and waste water, gas supply and industry applications.





## FIP PE100 polyethylene fittings for butt-welding

FIP pressure fittings are manufactured in Europe and have been used for years in areas of application where pipe systems have to meet high standards in durability and reliability. These standards are achieved by combining the excellent material properties of Polyethylene (PE) to create homogeneous welded joints which can withstand significant loads.

The FIP PE100 pressure piping system has optimal thermal stability, high flexibility of use and robust impact resistance. These features make it suitable for installation in a variety of industrial processes and environmental conditions.



Short and long fittings for butt-welding, long fittings for electrofusion, fittings made from pipe, backing ring & gaskets, GOEMA pipe clips.



Water treatment installations, waste water transport, swimming pool construction, industrial process pipe systems, transport of solids.



**ISO**<sup>®</sup> **ISO**<sup>®</sup>  
ISO 9001 ISO 14001





## STRAUB – Swiss premium pipe & repair couplings

STRAUB products are manufactured in Switzerland and the company has over 50 years of experience in the design and production of first-class mechanical coupling and repair solutions. It is considered "the original" in its field.

The STRAUB range of products offer a simple means of mechanically joining plain-end pipes in any material, including metal or plastic.

The repair couplings provide efficient pipe damage control in a variety of piping systems, including those under pressure. The benefits include simple and rapid installation without the need for specific tools or pipe preparation. In addition, the products are lightweight and save space.



STRAUB-GRIP from 21.3mm to 711.2mm, STRAUB-FIRE-FENCE 457.2mm, from 168.3mm, from 355.6mm, from 25mm to STRAUB-ECO-GRIP 26.9mm to STRAUB-COMBI-GRIP 38.0mm to STRAUB-PLAST- GRIP from 40mm to 400mm, STRAUB-FLEX and STRAUB-OPEN-FLEX from 48.3mm to 4064.0mm, STRAUB-CLAMP from DN 44 to DN 440 and STRAUB-REP-FLEX from OD 46mm to OD429mm



STRAUB pipe couplings are approved for virtually all piping systems in all sectors for example; water management, industry, ship building, offshore, civils, chilled water lines for both above and below ground.





Durapipe  
**superFLO**  
**ABS**  
 Chilled & cold water pipework

## Durapipe SuperFLO ABS chilled and cold water pipework

SuperFLO ABS is manufactured in the UK and has multiple performance and economic benefits. This makes it the ideal solution when there is a requirement for a pipe system to transport low temperature fluids at pressure.

SuperFLO ABS offers a superior alternative to steel

options. Firstly, it is made from a durable material, which allows the pipework to remain ductile in temperatures as low as  $-40^{\circ}\text{C}$ . Furthermore, its limescale and corrosion resistant properties significantly reduce maintenance requirements. Its lightweight nature and easy solvent weld jointing technique also contribute to reduced labor time and costs.



A solvent welded, fully matched pipework system incorporating pipe, fittings and valves that is available in both imperial and metric sizes from 16mm to 315mm, metric pressure rating PN8.



An ideal installation for buildings, data centers, factories and water treatment facilities for chilled water, boosted cold water, potable water, low temperature cooling, demineralized water, vacuum systems and waste water solutions.



**WRAS**

**ISO 9001**

**ISO 14001**



DNV-GL

Lloyd's Register

# MAGNUM 3G



## Magnum 3G System

MAGNUM 3G is manufactured in Europe and is a newly engineered compression fitting. It is widely recognized as the most innovative and revolutionary product to connect Polyethylene pipes based on concepts adopted in the Australia and UK markets.

MAGNUM 3G compression fittings are designed to optimize performance and are based on a 'slide &

tighten' low interference hydro-mechanical sealing system. This special system guarantees the insertion of pipes into the fittings with very low manual effort and complete operational safety. They offer a range of advantages over metal threaded fittings which include faster, easier and reliable installation and lower insertion force needed due to lower friction with the pipe.

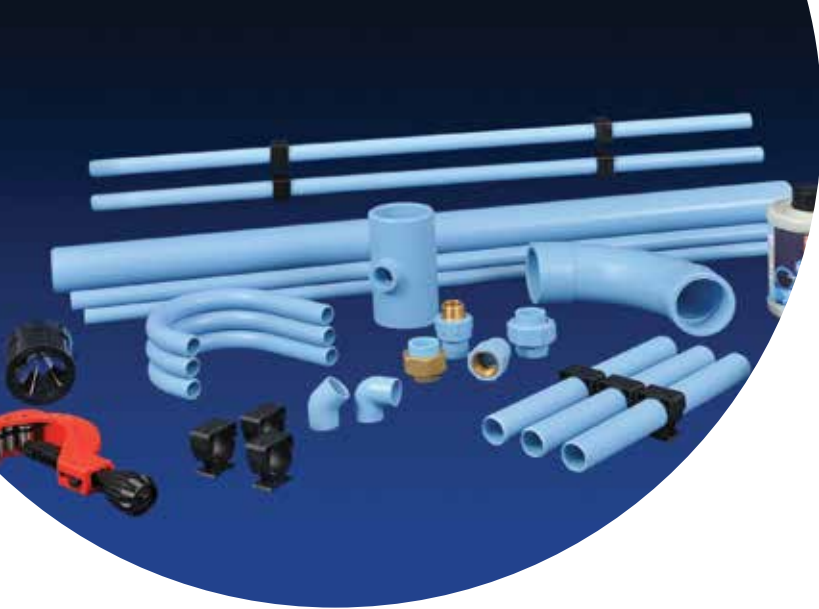


MAGNUM 3G range includes straight and reducing coupling, tees, elbows, end connectors and caps from d.16mm to d.63mm. MAGNUM 3G large Bore d.75mm, 90mm and 110mm. MAGNUM 3G Brass from d.20mm to d.63mm.



An ideal solution used worldwide by water companies, civil contractors and plumbers for several applications: water supply, irrigation, swimming pool systems.





## GIRPI GIRAIR® pipe fittings and valves for compressed air

GIRAIR® is manufactured in France by GIRPI who specializes in the design and fabrication of pipework systems. GIRPI's GIRAIR® offers a complete piping system for compressed air distribution networks and meets the demanding requirements of the building industry.

The GIRAIR® system has been on the market for more than 30 years and is recognized for its reliability which extends from compressor outlet to wall plate

connections. The system is designed to withstand maximum working pressures of up to 12.5 bar at 25°C, and to meet the vast majority of compressed air distribution requirements. GIRAIR® is corrosion resistant, energy saving and recyclable. It is also resistant to impact, even at very low temperatures, and has a "best in class" fire reaction rating of Bs1 d0 according to Euroclasses.



Pipes and fittings are available from d.16mm to d.110mm, solvent welded. A large range of male and female threaded fittings as well as stop valves and various accessories.



An ideal solution for compressed air distribution, neutral gas distribution, centralized vacuum networks.





# Industry: setting benchmarks across the world

Global megatrends are forcing industries to evolve at a very high pace. Consequently, engineering requirements become stricter every day. That is why Aliaxis is investing heavily in its leading range of piping and pressure systems for fluid handling and compressed air distribution. Our process piping continually meets the strict engineering requirements of industrial clients for temperature, pressure, chemical resistance, abrasion resistance and more.







## FIP thermoplastic valves, fittings and instrumentation for pressure piping systems

FIP has been an Italian pioneer of top-quality polymer valves and fittings for more than 60 years. It is renowned for the design and manufacture of valves, measurement and control instruments and pressure piping systems which offer greater plant efficiency.

The FIP product portfolio, manufactured in Italy, provides effective solutions for pressure pipeline industrial systems. FIP products are also ideal for dealing with fluids at high temperatures, chemically aggressive conditions and in industrial situations that demand

reliability and long-lasting performance. FIP products have continually proven the solution of choice for the most conventional pressure pipeline systems. These include water distribution systems, civil and industrial water treatment, irrigation, sports facilities, swimming pools and spas.

Ultimately, FIP products are advantageous when ease of installation, minimum maintenance and assurance of long-life performance is required.



PVC, C-PVC, PP-H and PVDF thermoplastic valves, fittings, instrumentation (flow, pH/ORP, conductivity) for pressure piping systems.



An ideal solution for process pipework including aggressive, corrosive and fluids. This encompasses desalination plants, water distribution systems, civil and industrial water treatment and the chemical industry. It also includes swimming pools, irrigation, sports facilities, marine and more.





Durapipe  
**PLX**  
 Safe Pipework for Fuel

## Durapipe PLX Safe pipework for fuel

Durapipe PLX is manufactured in the UK and offers a complete range of dedicated fusion-welded pipework technology facilitating the safe transfer of fuels and their vapors in pumped or vacuum applications. The system fulfills the specific needs of various fuel applications in retail, commercial and industrial markets around the world.

The range represents a major innovation in pipework technology as it offers the ultimate in environmental protection with maximum protection against permeation and leakage. This is achieved through unique product features which include corrosion-resistant single wall and secondary contained piping and fusion welding for robust joint integrity.



Multilayer pipe system HDPE with EVOH liner from 32mm to 315mm and 32#40mm to 315#400mm.



Forecourts, commercial and public vehicle refuelling, critical power, AdBlue / Diesel Exhaust Fluid (DEF), hydrocarbon drainage, buried or above ground.



DIN8074/8075, BS EN 1555, BS- 21/ISO- 7





## IPEX PVC/C-PVC pipes and fittings

IPEX is manufactured in Canada and the USA and offers a comprehensive range of integrated process piping systems in Polyvinyl Chloride (PVC) and Chlorinated Polyvinyl Chloride (C-PVC).

The product range is designed to meet the temperature,

pressure and flow requirements of piping systems used in chemical processes and other industrial applications. It is globally renowned for breaking ground in some of the world's toughest and most demanding environments. IPEX products also offer a low maintenance alternative to common and exotic metal systems.



Xirtec 140 PVC Schedule 40 & 80 size available from 1/4" to 24", Corzan C-PVC Schedule 40 & 80 size available from 1/2" to 16".



Ideal solution for plant chemical distribution lines, water and waste water, cooling water, marine and offshore and cooling tower systems, plant water supply.





## IPEX Guardian™ double containment

IPEX Guardian™ Systems are manufactured in the US and have been the benchmark in double containment for more than 25 years. Made from Polyvinyl Chloride (PVC) and Chlorinated Polyvinyl Chloride (C-PVC), these systems offer a complete line of pipes, fittings, valves and leak detection which is unmatched in the industry.

The product range includes a complete selection of pre-tested modular components which are extremely easy to install. Its Centra-lok™ patented design allows IPEX to offer vinyl systems which average up to 60% fewer overall joints and up to 10% fewer field joints.



IPEX Guardian Systems are available in sizes 1/2' x 2' up to 18' x 24' (Carrier x Containment) in Sch 40 or Sch 80. However, CPVC containment is only available up to 16" and PVC Clear containment is only available up to 10".



Ideal for leak contention and detection, pipe protections and condensation mitigation. Can be used with use with a wide range of acids, alcohols, salts and halogens.





# Irrigation & Agriculture: maximizing efficiency and reducing wastage

Greater demand for food means more pressure on precious water supplies, so making agriculture more efficient is essential to creating a sustainable future for people and our planet.

At Aliaxis, we offer a range of solutions to support this goal, with quality systems that help farmers manage crop irrigation and provide drinking water for their animals. We support companies and farms around the world, by gaining a detailed understanding of their needs in order to design and install bespoke systems. Aliaxis continues to add to our range of solutions for the agriculture industry and we work closely with customers and partners to develop new innovations.





## Best solution for water adduction with lightweight, cost-effective pipework system

ASTORE thermoplastic pipework systems have been manufactured in Europe and used for the pressure pipework requirements of different market sectors for many years. Since 1970 ASTORE has been known worldwide for the cost effective and reliable thermoplastic fittings and valves offer for pressure pipework. The ASTORE range is manufactured from either ABS or PVC-U and is used for a variety of applications where a lightweight, flexible and durable pipework system is required. Furthermore, ASTORE also

offers a wide range of clamp saddles and compression fittings as well as a modular manifold system that can all be used for a wide range of water related applications.

ASTORE polypropylene compression fittings are suitable for installations that may require occasional disassembly or partial removal for maintenance. They can be used in both irrigation and drinking water systems, where a quick and simple pressure connection is required.



ASTORE joints range includes compression fittings, clamp saddles and PVC-U valves to satisfy a very wide range of plant engineering installation requirements. The joints range leaves from d.16 mm up to d.110 mm. The joints provided with threads have a metal reinforcement on the external part of the thread, leaving from r. 1 1/4".



Water adduction systems in irrigation field and drinking water systems. It is also used for water treatment, aquaculture, pools and spas.



**WRAS**





by **aliaxis**

## Philmac

### Compression Fittings to connect PE pipe in both metric and imperial sizes

Philmac is a global leader in the design and manufacture of specialist fittings and valves for polyethylene pipelines. With a strong pedigree in product innovation, Philmac revolutionized how to connect PE pipes by developing the worlds first all plastic compression fitting back in 1968.

Manufactured in Australia, Philmac's wide range of

innovative compression fittings include 3G Metric Imperial, the only compression fitting in the world that can connect both metric and imperial sized PE pipes from either end. The award winning Universal Transition Coupling (UTC) range connects rigid pipes of different materials with different outside diameters, making connections between PE, PVC, Copper, or Galvanized Iron pipes easier than ever before. Safelok is Philmac's latest range of compression fittings to connect PE pipes up to 110mm.



3G Metric Imperial Compression Fittings to 2"/63mm

Universal Transition Compression Fittings up to 63mm

Safelok (Large Diameter) Compression Fittings up to 110mm



Philmac pipe connection solutions are ideal for irrigation, mains water supply, gas and mining applications.



**WRAS**





## Jimten Filtmaster discs, filter and air vent valves

Jimten Filtmaster is manufactured in Spain and uses the most advanced technology to achieve efficient water filtration in the industrial and agricultural fields.

Its modular filter system with filter media, screen and disc filters has a wide molecular capacity which means it is versatile and suited to any kind of water. Furthermore,

the patented disc system allows a real micron gap along the filtering surface.

Jimten Filtmaster offers several unique benefits which include simple installation, adaptation to a variety of water types and ease of cleaning. This makes it one of the most efficient, versatile and profitable filtration tools on the market.



Available in 25, 50, 100, 130 y 200 microns, with a range applicable both in low volumes (up to 15 m<sup>3</sup>) and flow rates up to over 600 m<sup>3</sup> capacity. Filters 2" and 3" allow multiple configurations to create manual versions, hydro-cyclone and self-cleaning.



Filtmaster automatic filtration stations can be used in a wide range of applications as: cooling tower protection, nozzle protection, pre-filtration to protect UF/RO membranes, filtration of wastewater for reuse and filtration for irrigation.





## Residential & Commercial



Al Batha Tower, Business Bay, UAE (Marley)



Al Khouzama Villas, KSA (Wefatherm)



Al Mana Square, Qatar (HDPE)



Al Nasr Stadium Dubai, UAE (Marley & dBlue)



Al Thumama Stadium, Qatar (Wefatherm)



MAG 5 Boulevard DWC, Dubai, UAE (Sanit)



Port View Al Wasl, Dubai, UAE (Sanit)



ISF Camp, Qatar (dBlue)



Al Wakrah Stadium, Qatar (Wefatherm)



American International School Jeddah, KSA (Wefatherm)



Emaar Beach Vista, Dubai, UAE (dBlue)



RIT University Campus, Dubai, UAE (Wefatherm, HDPE, dBlue & Sanit)



Sahara Center, Sharjah, UAE (Marley)



Vox Cinema Riyadh, KSA (Wefatherm)



MAG 318, Dubai, UAE (Sanit)



SANG Housing, KSA (Multikwik)



Al Wafra Tower - Reem Island, UAE (HDPE & Marley)



Gate Tower, Sharjah, UAE (Marley)



## Healthcare



Al Amiri Hospital, Kuwait (Sanit & HDPE)



Al Jahra Hospital, Kuwait (HDPE)



Al Salam Hospital, Kuwait (Wefatherm)



Dr. Sulaiman Al Habib Hospital, KSA (Wefatherm)



Emirates Hospital Mirdif, Dubai, UAE (Wefatherm)



Aster Hospital Al Qusais, Dubai, UAE (Wefatherm)



King Fahad Armed Forces Hospital, KSA (Wefatherm)



King Faisal Specialist Hospital & Research Center, KSA (Wefatherm)



King Khalid University Medical City, KSA (Vulcathene)



King Saud Bin Abdulaziz University Hospital, KSA (Vulcathene)



King's College Hospital, Dubai, UAE (dBlue & HDPE)



National Hospital Riyadh, KSA (Wefatherm)



Royal Oman Police Hospital, Oman (dBlue)



Saudi German Hospital Dammam, KSA (Wefatherm)



Security Forces Medical Center (SFMC), KSA (Vulcathene)



## Hospitality



Aloft Hotel Garhoud, Dubai, UAE (dBlue & HDPE)



Byblos Hotel Palm Island Dubai, UAE (Sanit)



Crowne Plaza Dubai Marina, Dubai, UAE (Sanit)



Four Season Hotel, Kuwait (Wefatherm)



Hampton by Hilton, RAK, UAE (dBlue & Marley)



Kempinski Hotel, Business Bay, UAE (dBlue)



Hilton Garden Inn, Kuwait (Sanit)



Holiday Inn & Staybridge Suites, Dubai, UAE (Wefatherm, HDPE & dBlue)



Intercontinental Hotel Muscat, Oman (Sanit)



Intercontinental Hotel, RAK, UAE (Wefatherm, HDPE & dBlue)



Marriott Hotel Jeddah, KSA (Sanit)



Novotel Hotel, Sharjah Expo, UAE (dBlue)



The One Hotels in JVT and Business Bay, UAE (Sanit & dBlue)



Park inn by Radisson Riyadh, KSA (Sanit)



Ramee Grand Hotel, Business Bay, Dubai, UAE (dBlue & Sanit)



Rosalie Hotel Riyadh, KSA (Sanit)



Taj Hotel - Signature Tower, JLT, UAE (dBlue & Sanit)



The Address Downtown, Dubai, UAE (Wefatherm & HDPE)



The Walk Hotel Satwa Dubai, UAE (Wefatherm & Marley)



The Address Harbor Point, Dubai Creek, UAE (HDPE & dBlue)



Vida Marina Hotel, Dubai Marina, UAE (dBlue)



Waldorf Astoria, Kuwait (Sanit)



Millennium Hotel Makkah, KSA (Wefatherm)



Hilton Garden Inn Hotel & Doubletree Suites, KSA (Wefatherm)



## Utility, Industry, Infrastructure



Al Ain Zoo, UAE (FIP)



Al Dhaid Crocodile Pool, UAE (FIP)



Al Ghadeer Villas, Gas Supply, UAE (Friatec)



DMCC, UAE (Friatec)



Jubail phase IV potable water plant, KSA (FIP)



JVC district cooling, UAE (Straub)

**we  
make  
life  
flow**

**Contact us**

**[middleeast@alixis.com](mailto:middleeast@alixis.com)**

Aliaxis Middle East | T: +971 (0) 4 3629423 | F: +971 (0) 4 4587599  
P.O Box 488100 Dubai, UAE | Indigo Tower Office 702 Cluster D, JLT

